

OTTAWA COMPREHENSIVE PLAN AND DOWNTOWN PLAN UPDATE

FIRST PUBLIC FORUM

Focusing on Downtown & Central School Site

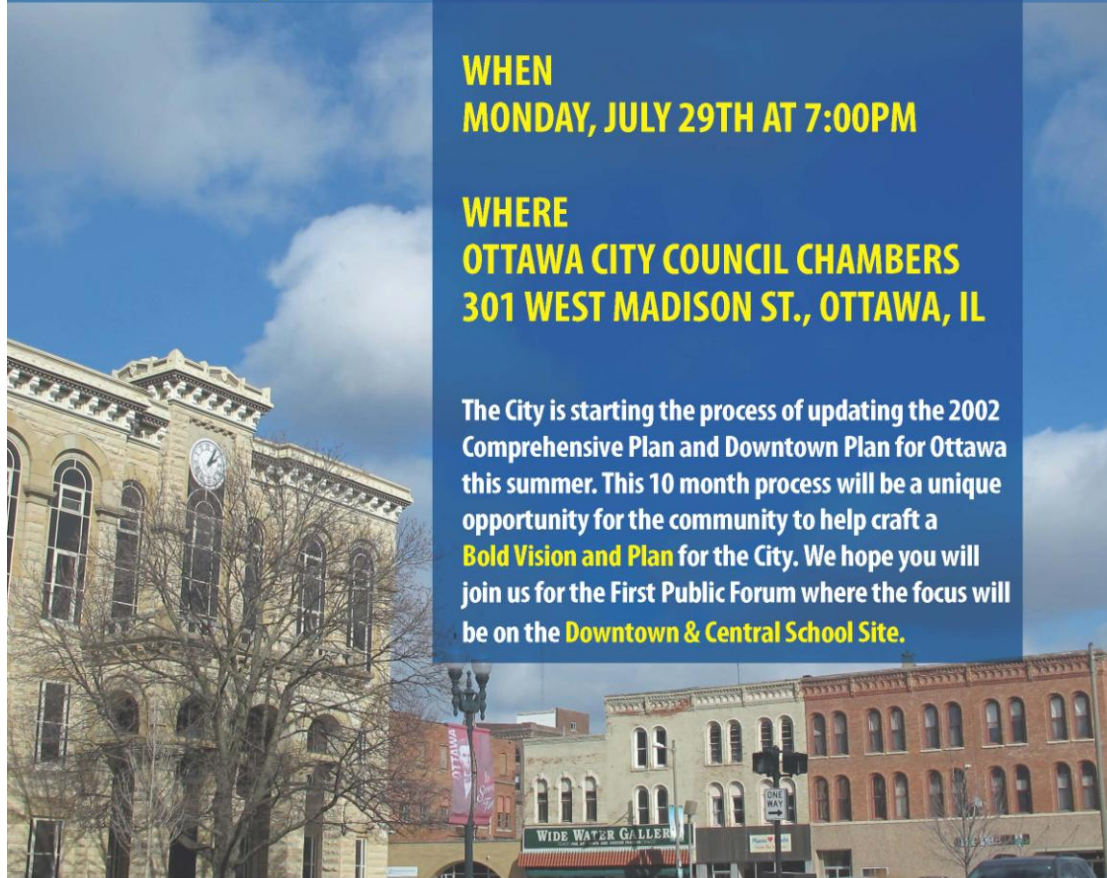
WHEN

MONDAY, JULY 29TH AT 7:00PM

WHERE

OTTAWA CITY COUNCIL CHAMBERS
301 WEST MADISON ST., OTTAWA, IL

The City is starting the process of updating the 2002 Comprehensive Plan and Downtown Plan for Ottawa this summer. This 10 month process will be a unique opportunity for the community to help craft a **Bold Vision and Plan** for the City. We hope you will join us for the First Public Forum where the focus will be on the **Downtown & Central School Site**.



For questions, contact: Tami Huftel, City Planner, (815) 433-0161 ext. 40, Email: planning@cityofottawa.org

2013 COMPREHENSIVE PLAN UPDATE & DOWNTOWN

PLAN

Prime Consultant and Lead Planner **GRUBB**

Planning & Design

Tourism & Hospitality **City of Ottawa**

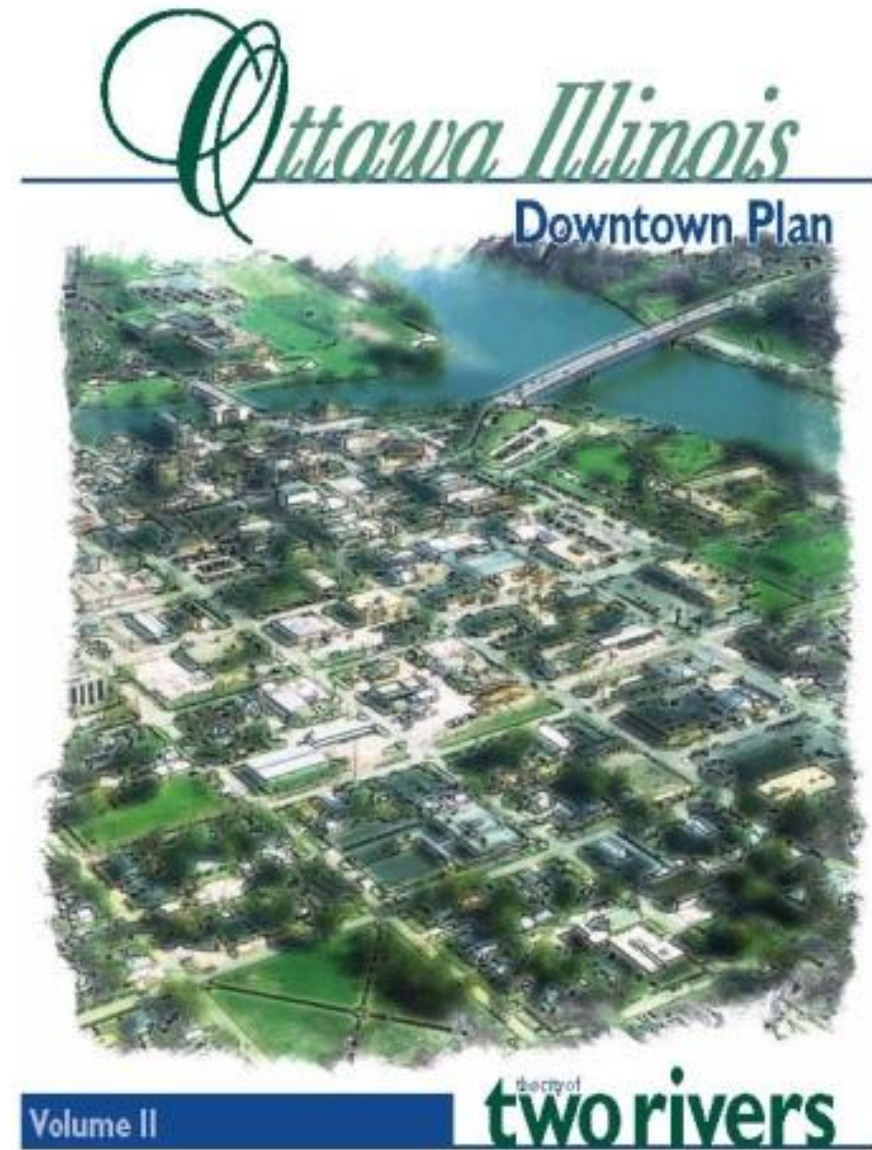
Civil and Stormwater Management **Spaceco**

Planning & Implementation **NCICG**

Landscape Architecture **Hitchcock Design Group**

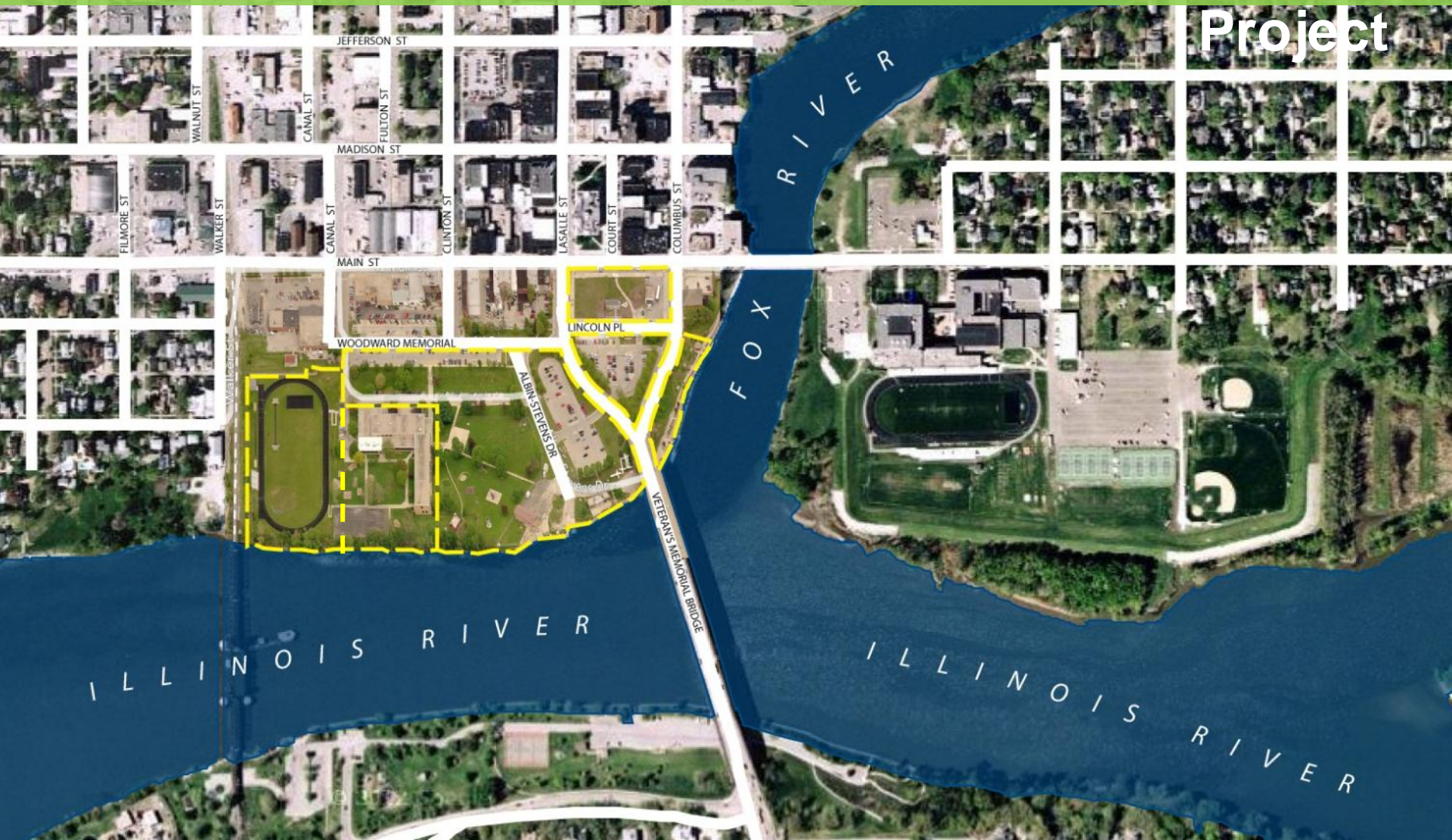
July 29, FIRST PUBLIC FORUM

Updating the 2008 Plans



Downtown Sites Master Plan

Opportunity to Create a Catalytic Waterfront Project



July 29, FIRST PUBLIC FORUM

7pm to 7:30pm

Introductions, Brief Overview of Project

7:30pm to 8pm

Breakout Sessions for feedback and discussion

8pm to 8:30pm

Summary of feedback, Next Steps.



OTTAWA HAS BEAUTIFULLY PRESERVED THE
ELEMENTS OF A **WORLD CLASS**
SMALL DOWNTOWN.

- MAIN STREETS ARE VIBRANT.
- STREETScape AND SIGNAGE ARE IN PLACE.
- BEAUTIFUL HISTORIC BUILDINGS ARE PRESERVED AND STILL IN USE.
- A DOWNTOWN PLAN AND BRANDING PLAN HAVE ALREADY BEEN ADOPTED.
- AND MUCH MORE.

WE AGREE WITH THE RFP - THIS PROJECT SHOULD BUILD ON THESE EFFORTS, NOT **REINVENT** THEM.

WE SEE SIGNIFICANT PART OF THIS EFFORT GOING TOWARDS **DETAILED MASTER PLANS** FOR THE KEY DOWNTOWN REDEVELOPMENT SITES - AND THAT IS WHERE OUR TEAM SHINES.

A CLASSIC DOWNTOWN-SQUARE.

A RICH ARCHITECTURAL HERITAGE.

AND A CLASSIC MAIN STREET.

Buildable Master Plans for a Unique Downtown.

REGIONAL TOURISM DESTINATIONS

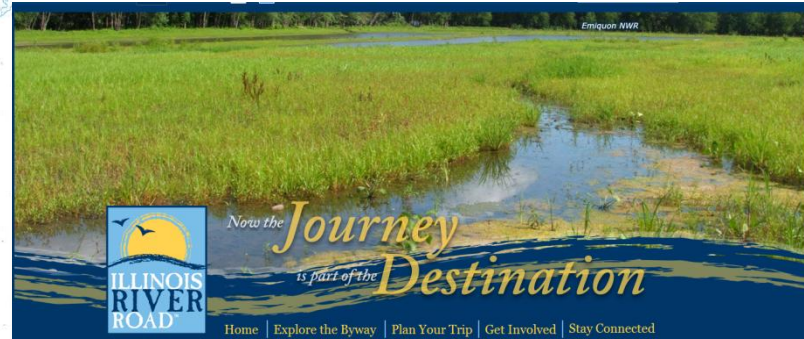


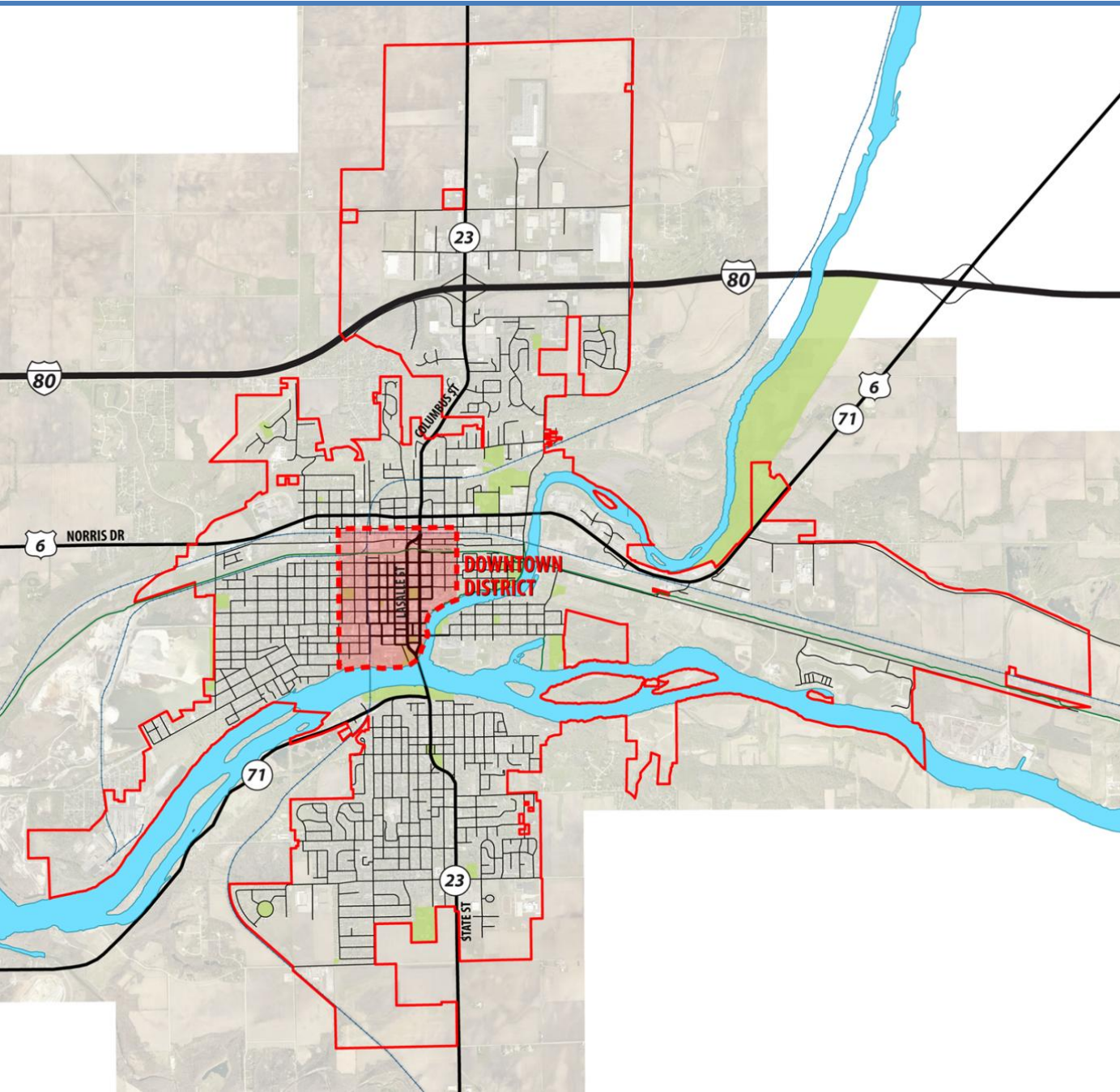
**TOURISM as a major economic engine for
Downtown Redevelopment**



**THIS IS AN OPPORTUNITY TO
LOOK AT FOUR SCALES:**

1. THE **REGIONAL** SCALE

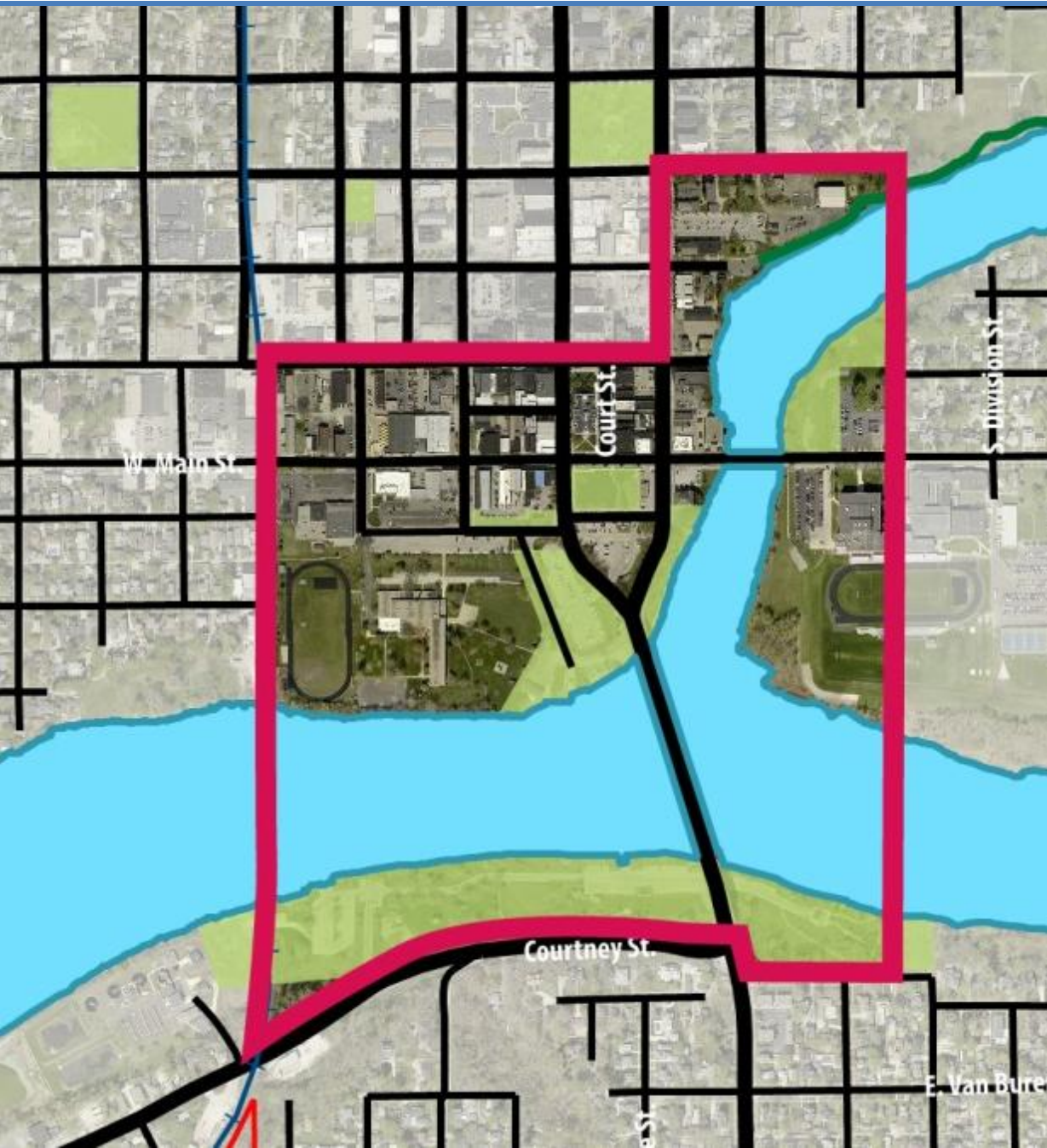




THIS IS AN
OPPORTUNITY TO
LOOK AT FOUR
SCALES:

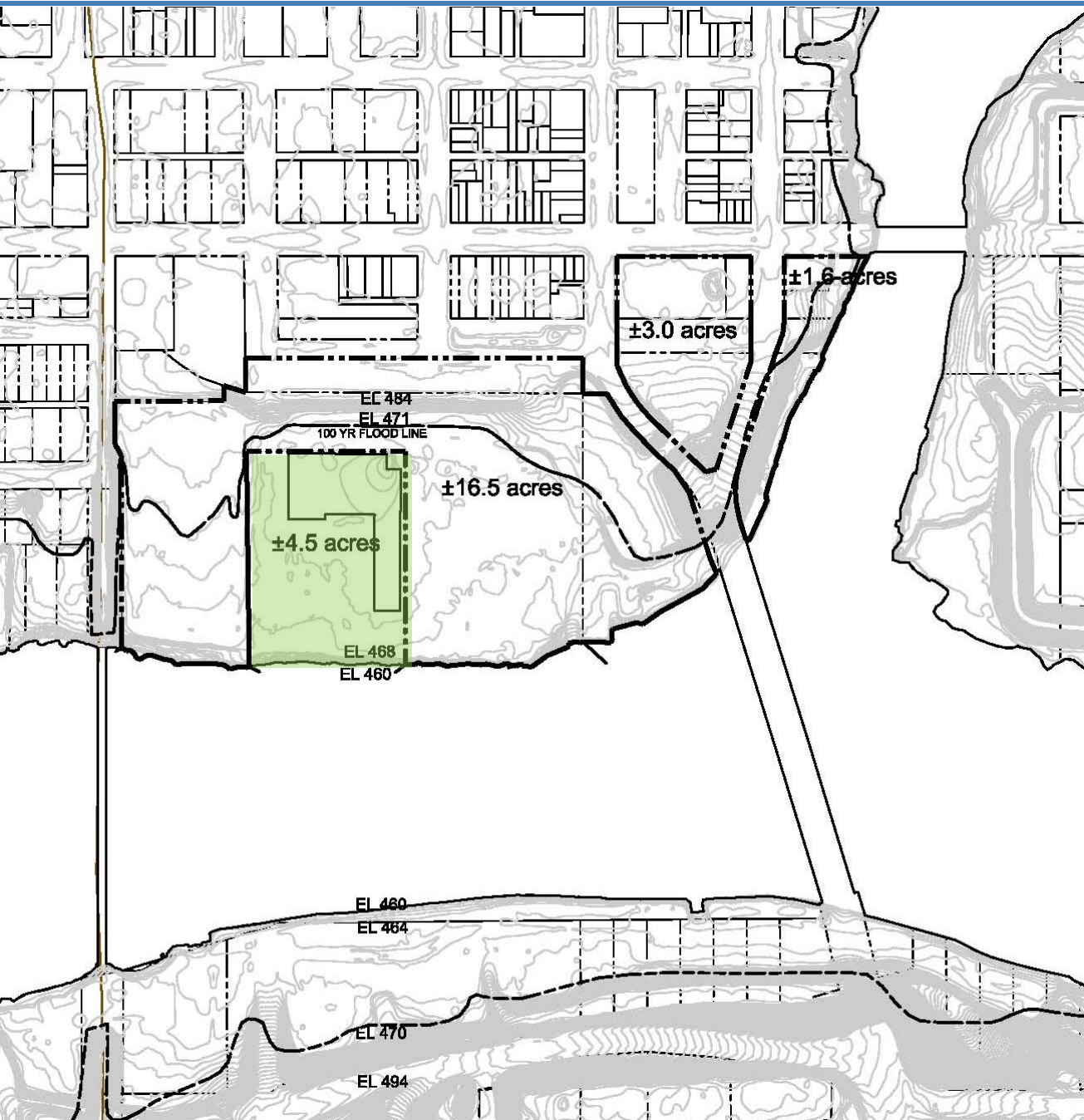
2. THE
CITY
SCALE

3. THE
DISTRICT
SCALE



THIS IS AN
OPPORTUNITY TO
LOOK AT FOUR
SCALES:

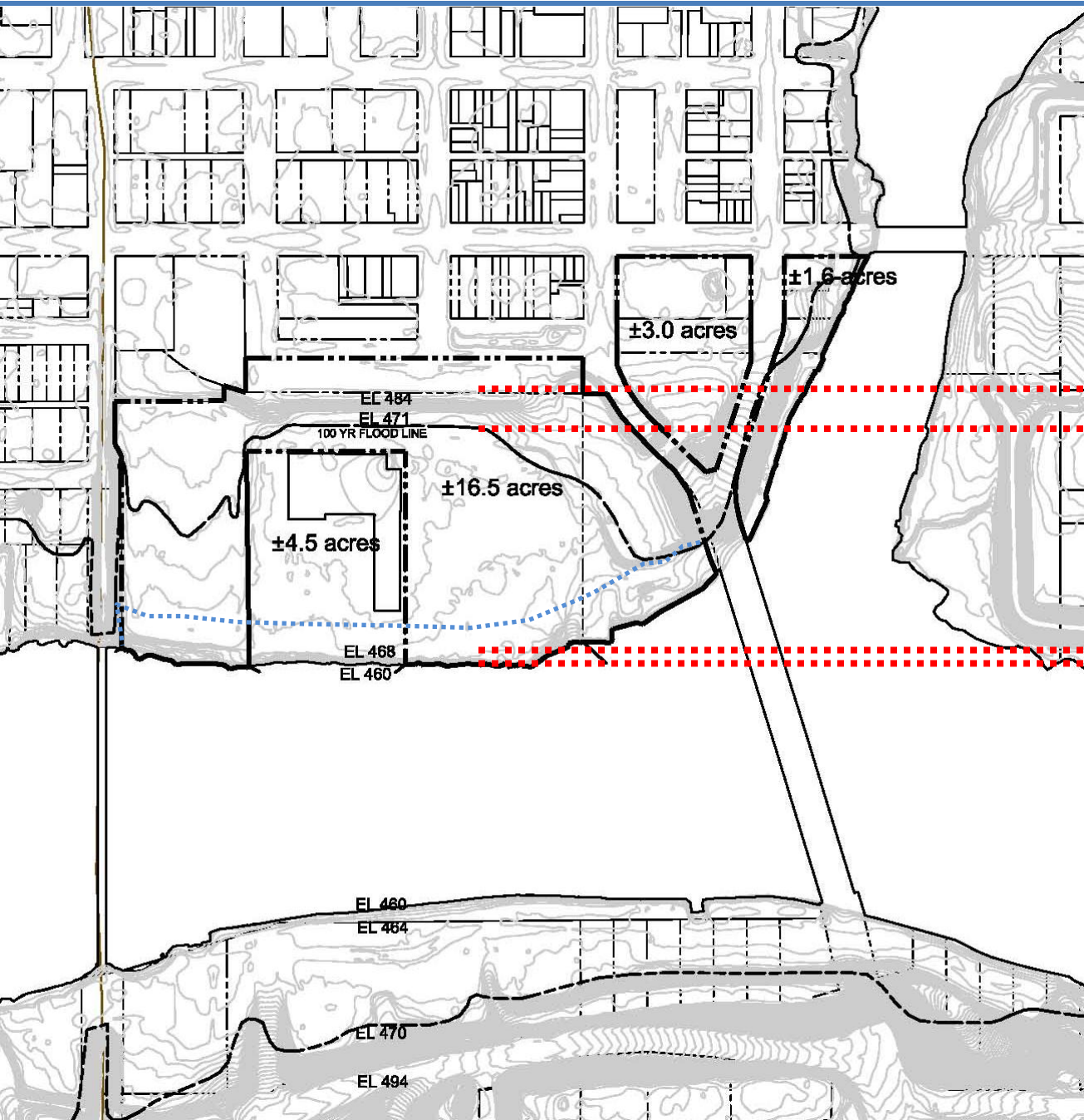
2. THE SITE SCALE



EXISTING PARCELS

**REDEVELOPMENT
OPPORTUNITY**
**TOTAL OF APPROX.
21.1 ACRES**

**REQUIRED PUBLIC
OPEN SPACE**
APPROX. 4.5 ACRES



EXISTING TOPOGRAPHY

STREET LEVEL APPROX. 484

APPROX. 471, 13 FOOT DROP

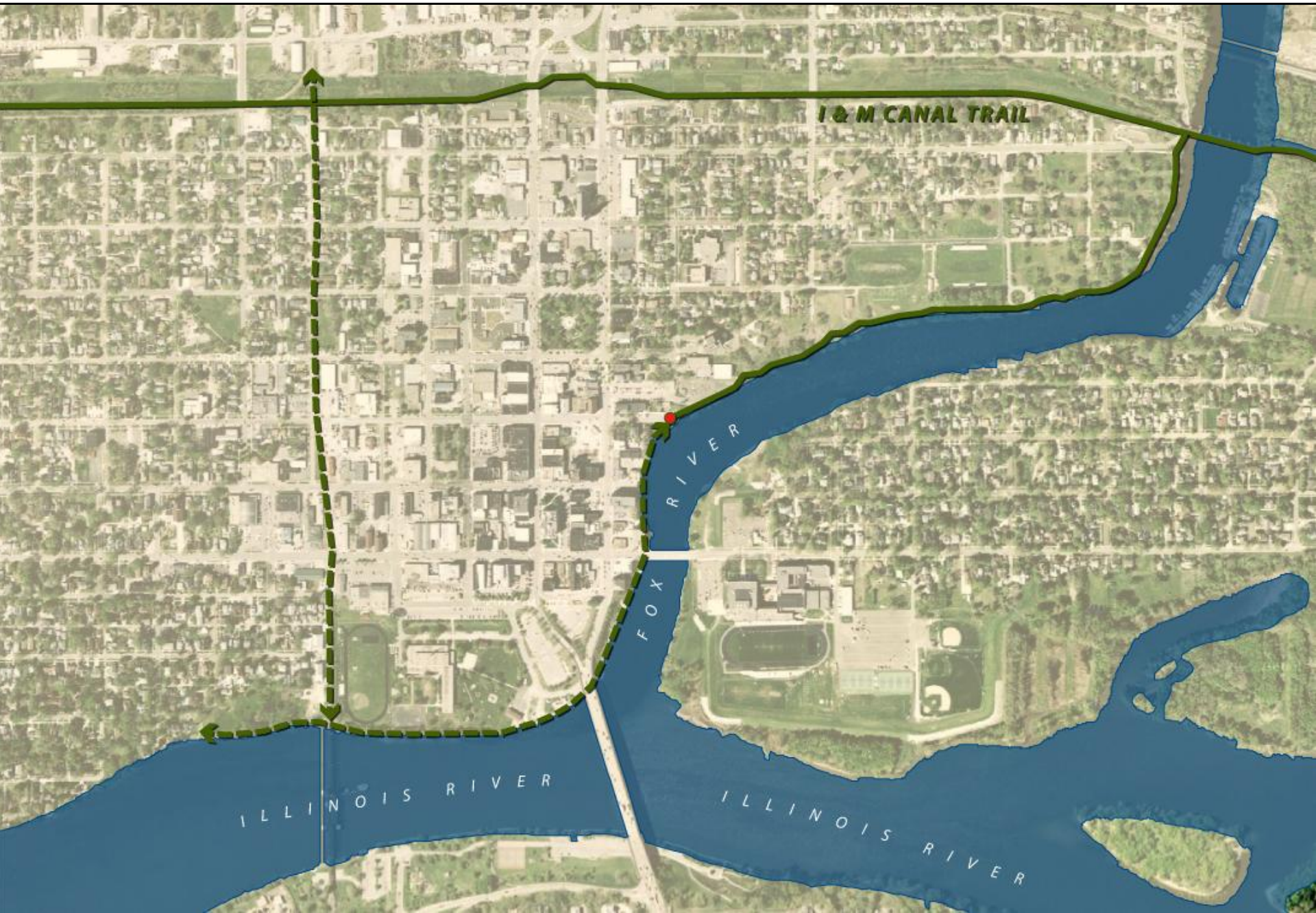
APPROX. 468, 3 FOOT DROP

APPROX. 460, 8 FOOT DROP

THE EXISTING TOPO OFFERS THE OPPORTUNITY TO THINK OF THE SITE IN THREE TIERS:

- STREET LEVEL (APPROX. 484)
- SITE LEVEL (471-468), AND
- WATER LEVEL (460)

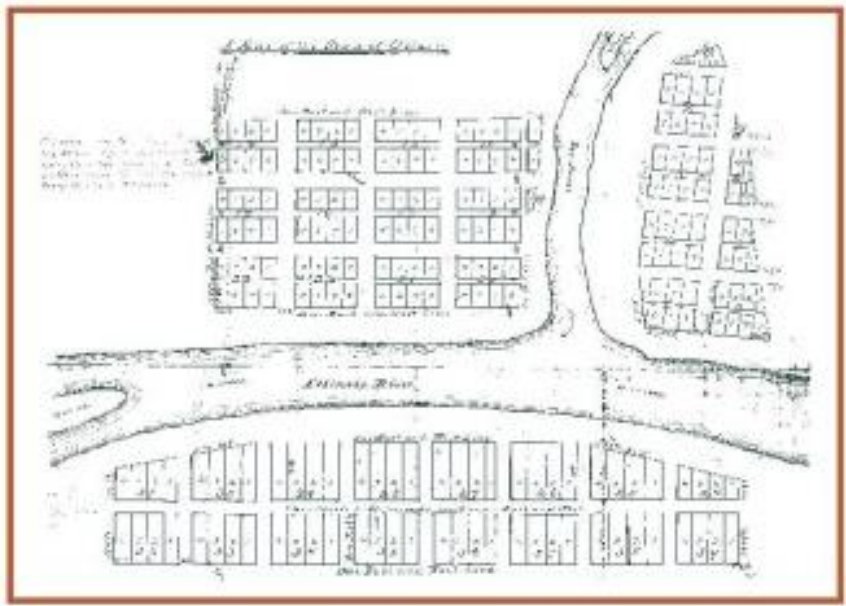




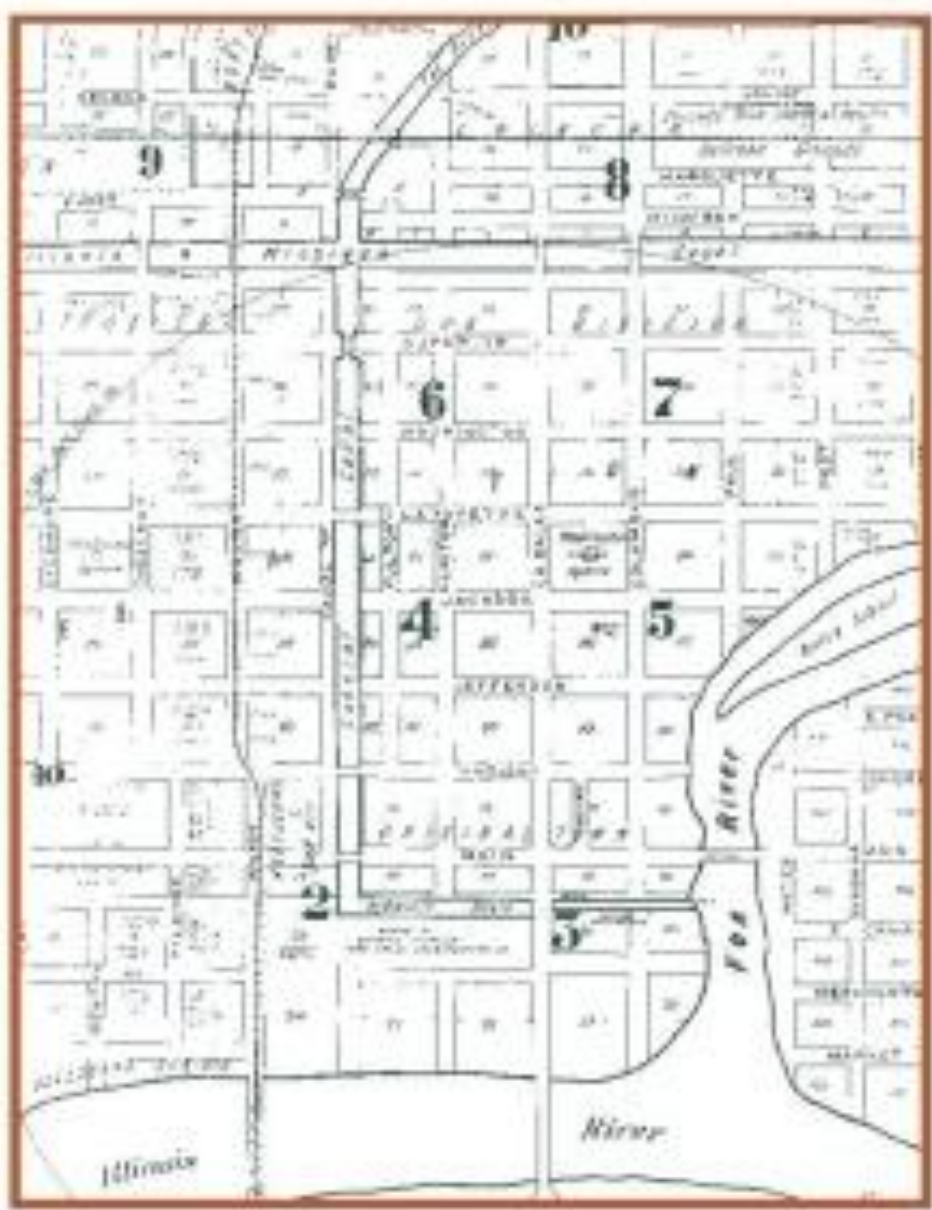
HISTORY

Look into the historic Canals
in “Canal Town”

Other historic assets that can
be leveraged beyond efforts
in place already



First Plat of Ottawa by Thomson (Canal Town)



Lateral Canal (Canal Town)

HISTORY

HISTORIC MAPS & PHOTOS

Section One: Historic Map

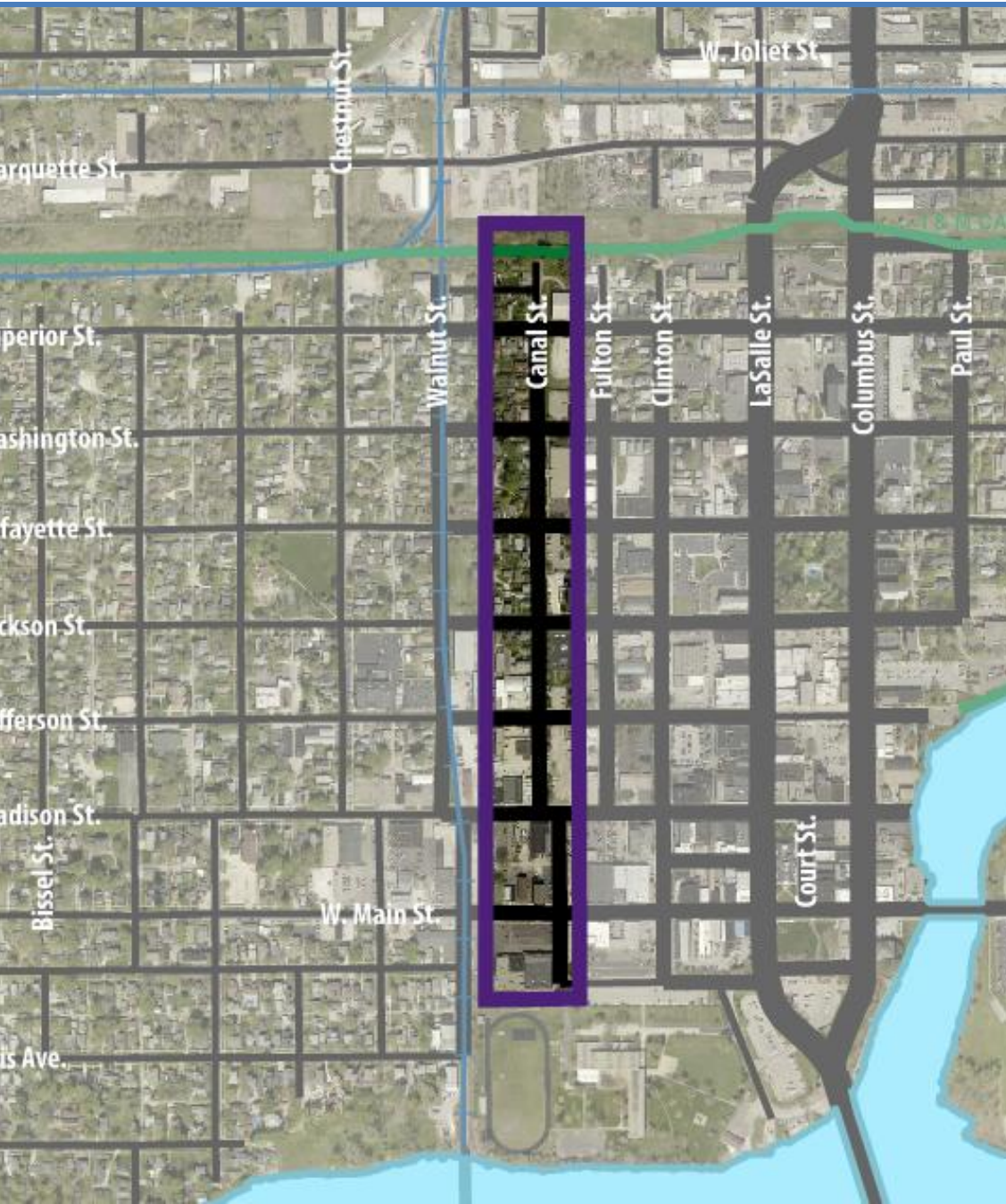
Sources are noted in the image log, below



Image A1 – 1888 Sanborn Map. The original plat of 1829 extended north from the Illinois River to Jefferson Street. The area north of Jefferson was added in 1831. Location of the Downtown Commercial District is highlighted in green.

Map of Proposed Historic District





OPPORTUNITIES

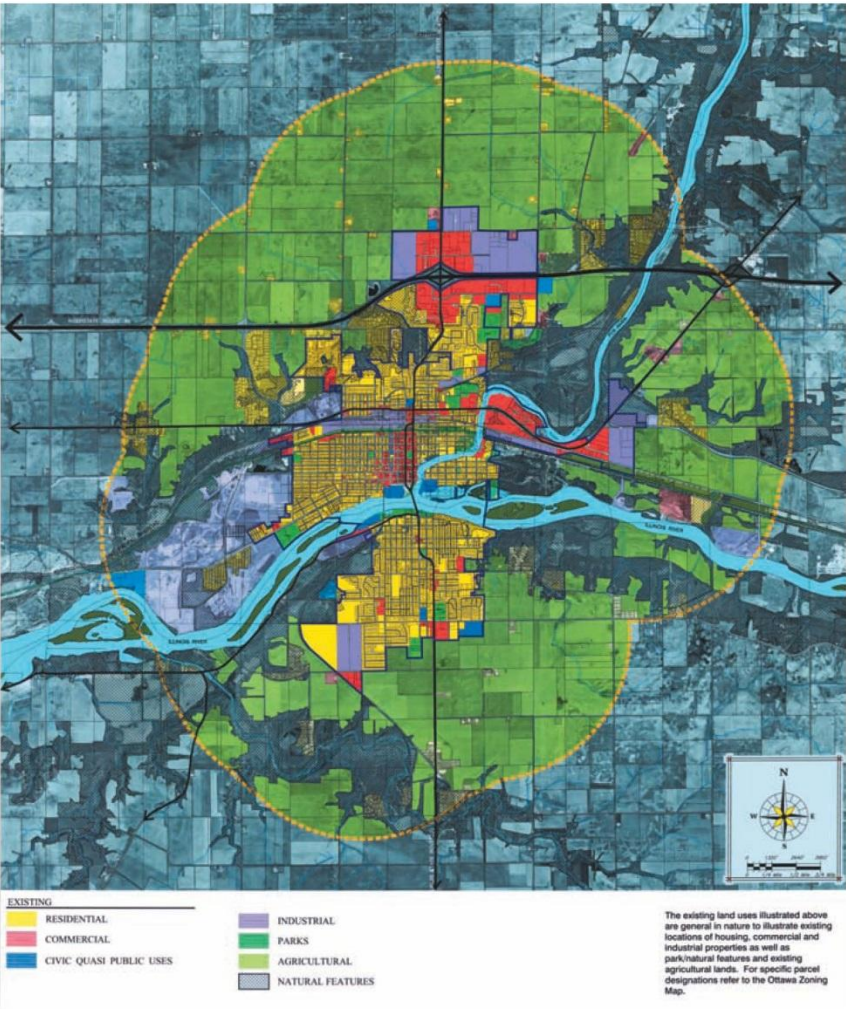
**BRINGING BACK THE CANAL AS
A MAJOR DESTINATION FOR
OTTAWA AND TO ATTRACT
NEW INVESTMENT IN THE
AREA**



2013 COMPREHENSIVE PLAN

LAND USE

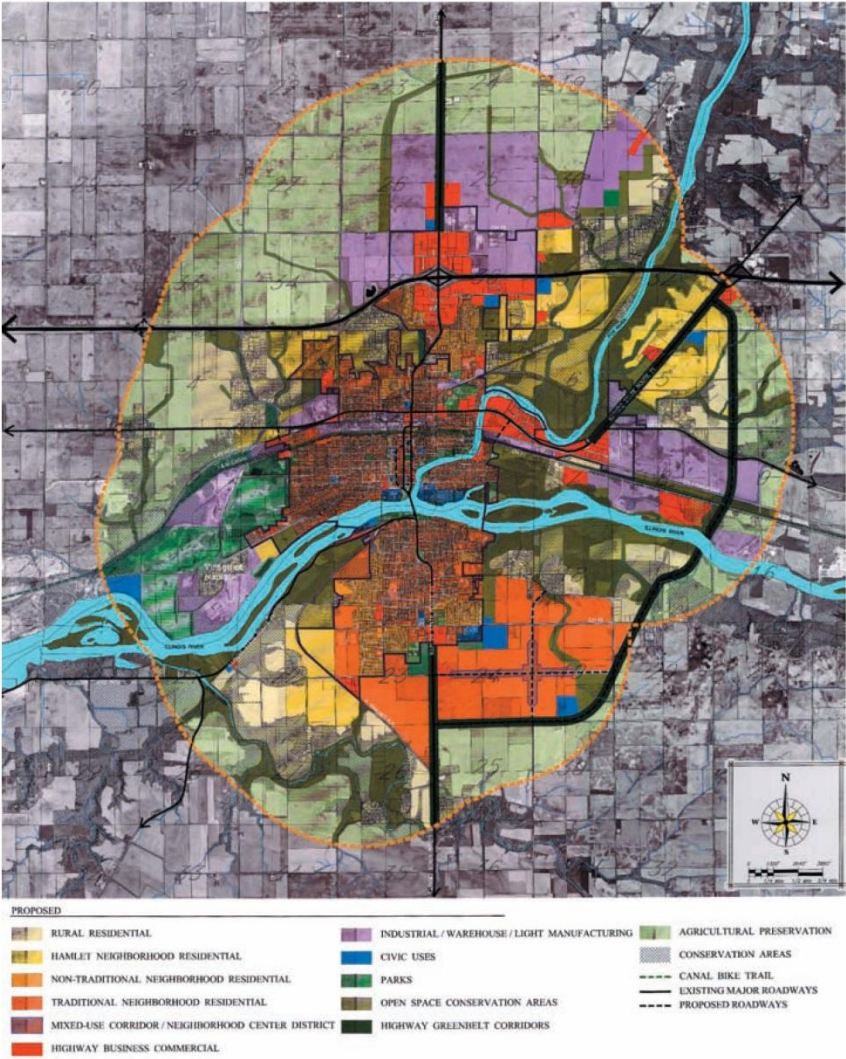
June 18, 2013 Working Meeting with City



Existing Land Use

Exhibit 1

2002 COMPREHENSIVE PLAN



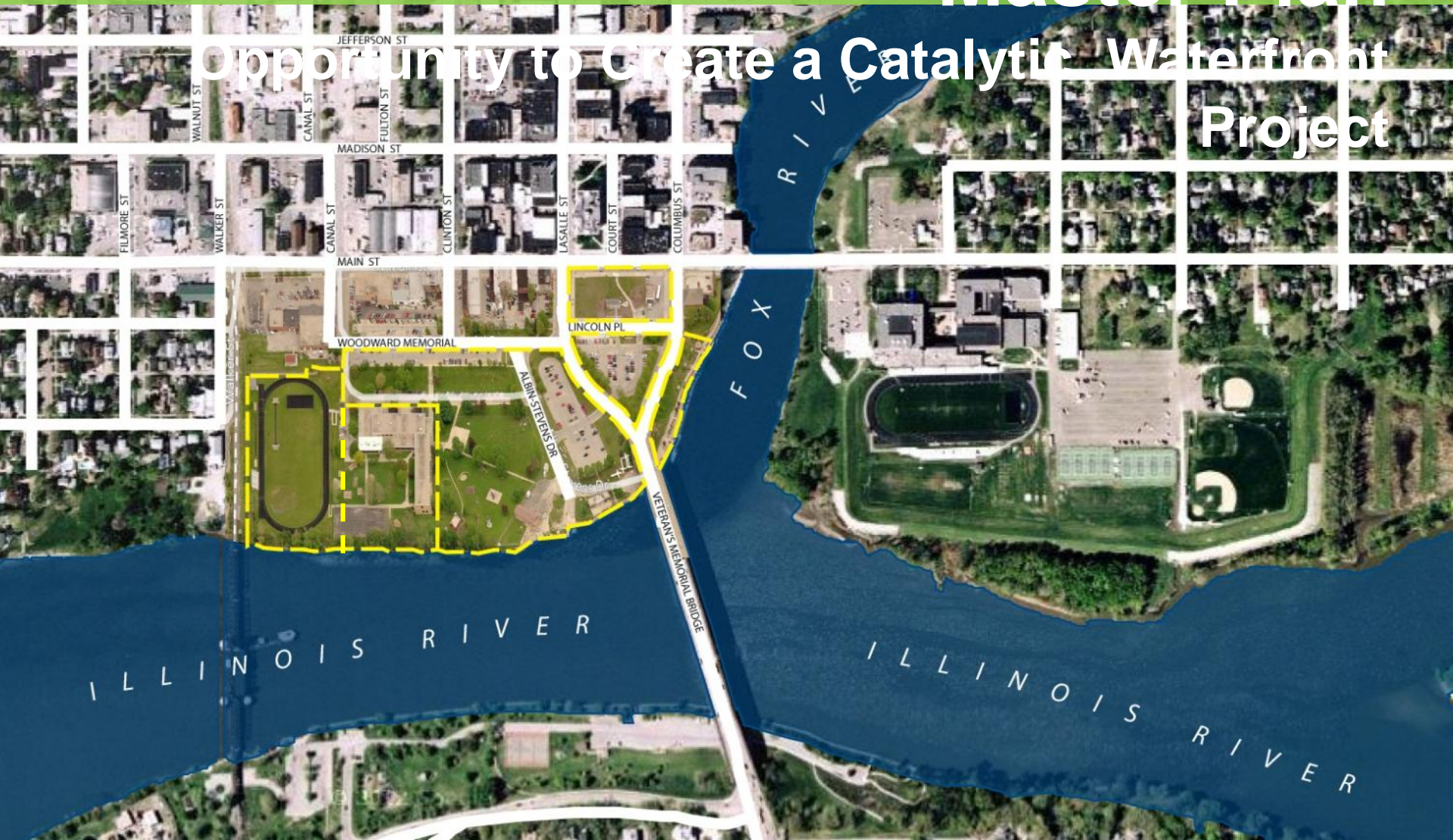
Major New Industrial Growth to the north and east (west also?)
Major New Residential growth to the south and east (along Fox River)

Future Land Use

Exhibit 8

Downtown Waterfront Sites Master Plan

Opportunity to Create a Catalytic Waterfront Project



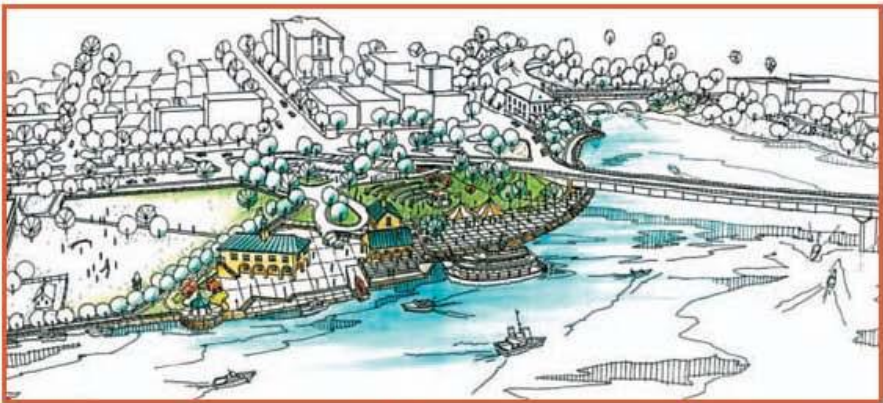
2002 DOWNTOWN PLAN DOWNTOWN RIVERFRONT CONCPETS

Riverfront Illustrative Plans

Exhibit 3



Illustrative Concept Plan of Riverfront Park



Illustrative Concept Plan of Riverfront Park by (Smith Group JJR)



Illustrative Concept Plan of Madison Street Park



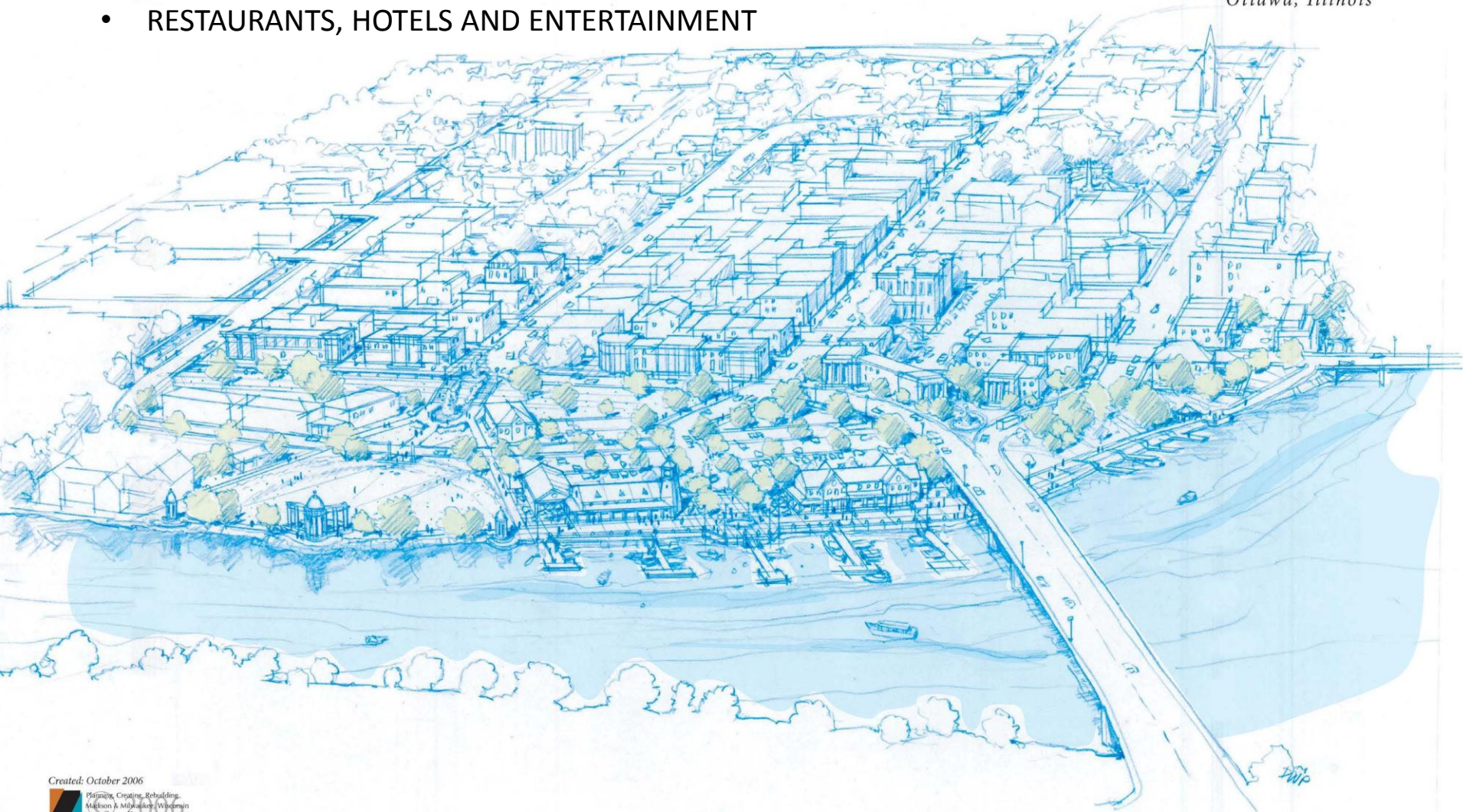
Illustrative Concept Plan of Riverfront Park by (Basalay Cary & Alstadt)

2006 BROWNFIELD REDEVELOPMENT STRATEGY

MAJOR RECOMMENDATIONS

- RIVERFRONT PERFORMANCE SPACE/ AMPHITHEATER
- DOWNTOWN MARINA
- RESTAURANTS, HOTELS AND ENTERTAINMENT

DOWNTOWN CONCEPT
ILLUSTRATION
Ottawa, Illinois



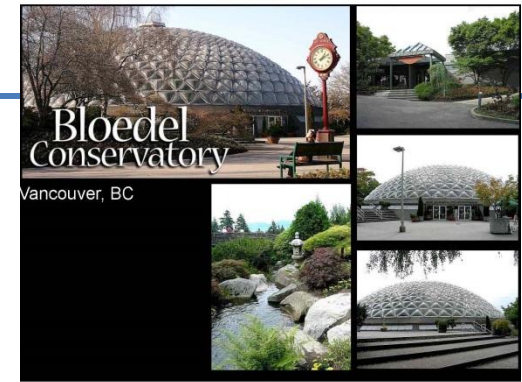
2008 BRANDING PLAN RECOMMENDATIONS

Primary downtown initiatives

- Populate the ground floor spaces with branded and diversionary retail, and restaurants.
- Retain a retail business recruiter to work with property owners and retail proprietors.
- Create a permanent home for an expanded open-air market.
- Develop more market-priced residential units on the upper floors downtown.

The primary ingredients

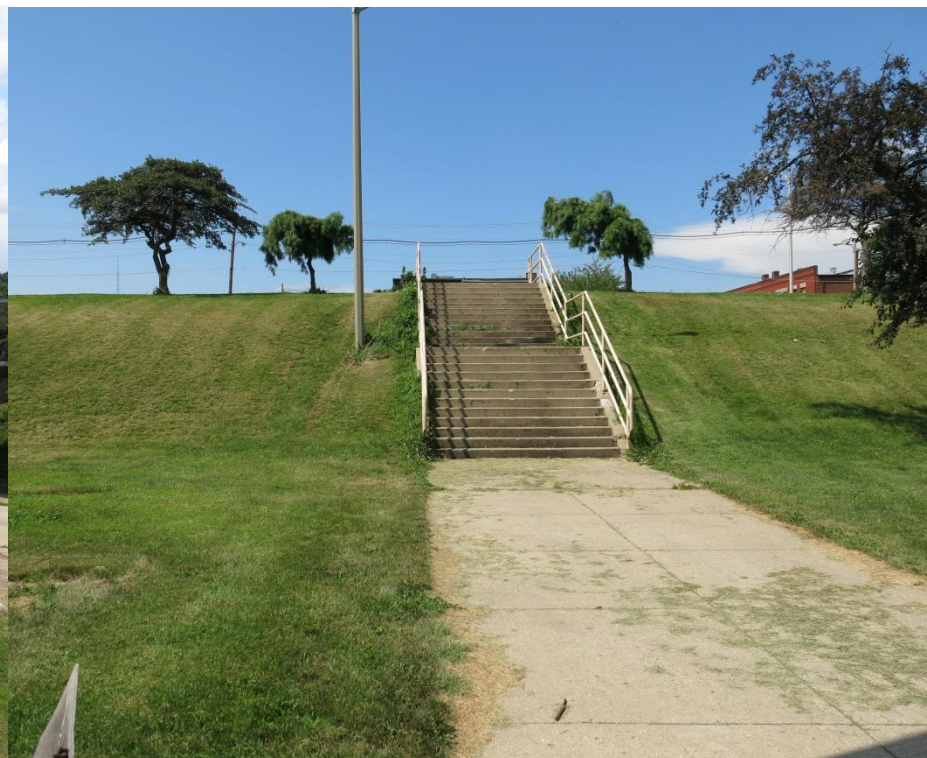
- A signature open air market.
- An atrium/arboretum for meetings, trade shows, special events.
- A stunning downtown in terms of beautification.
- One “anchor tenant” that fits the brand.



Overland Park City Market



Moving water is an attractor



THE 13 FOOT DROP FROM STREET LEVEL TO THE RIVERFRONT OFFERS CREATIVE OPPORTUNITIES.



**POSSIBLE REUSE OF RESCUE SQUAD BUILDING AND
BOAT LAUNCH**



**ENGAGE BOTH SIDES OF THE RIVER: ALLEN PARK
AND THE CENTRAL SCHOOL SITE**

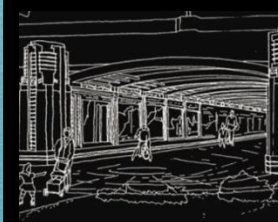


CAN THE BRIDGE BE MORE PEDESTRIAN AND BIKE FRIENDLY?



POSSIBLE IMPROVEMENTS TO UNDERBRIDGE CONNECTION

OVERCOMING BARRIERS AND CREATING “CONNECTED” TRAIL SYSTEMS





POSSIBLE IMPROVEMENTS TO UNDERBRIDGE CONNECTION



EXISTING RIVERWALK IS ALREADY A GREAT ASSET



POSSIBLE ENHANCEMENTS TO RIVERWALK AND BOAT DOCKS



**POSSIBLE UNDERBRIDGE CONNECTION UNDER
MAIN STREET BRIDGE**



**POSSIBLE UNDERBRIDGE CONNECTION UNDER
MAIN STREET BRIDGE**



HISTORIC BOAT CLUB BUILDING AND SITE AS A MAJOR ANCHOR



MAJOR OPPORTUNITY SITE AT RIVERBEND



HOW TO CONNECT THE RIVERWALK FROM MAIN STREET TO JEFFERSON STREET

DOWNTOWN WATERFRONT CENTER SCHOOL AND ADJACENT SITES



ENGAGE BOTH SIDES OF THE RIVER

The opportunity to create a Unique Waterfront Destination



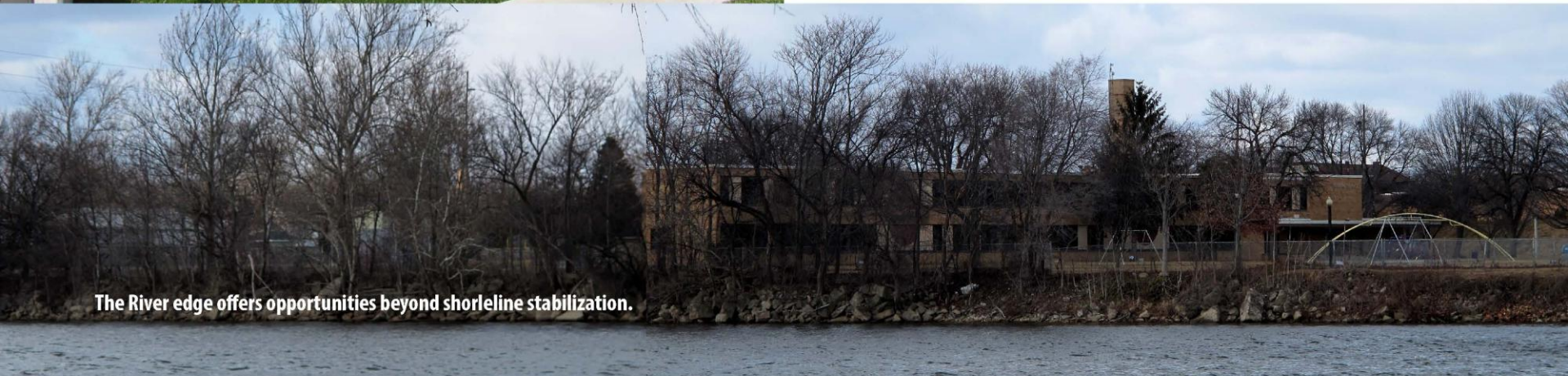
AT THE CONFLUENCE OF TWO MAJOR RIVERS

Ottawa's rivers help create the city's idyllic setting. With its sweeping river vistas the newly acquired waterfront site can become a gathering place and a new focal point for Ottawa's Downtown.

THERE ARE GREAT OPPORTUNITIES TO CAPITALIZE ON THIS UNIQUE SETTING AND BRING DOWNTOWN TO THE RIVERFRONT.

POSSIBILITIES TO CONSIDER

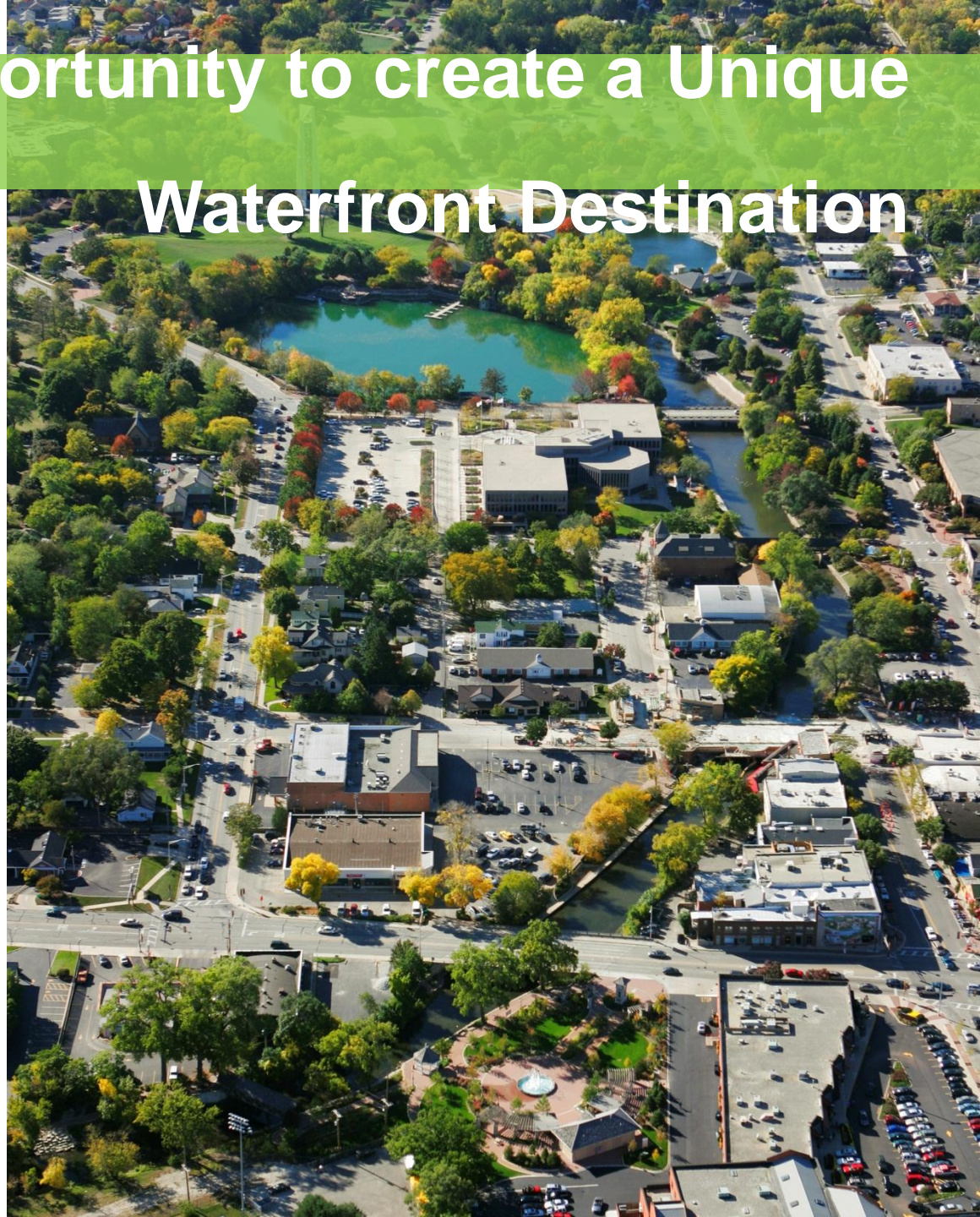
- What RIVERFRONT developments can serve both the community and create NEW REGIONAL TOURISM ATTRACTIONS?
- An opportunity to create an URBAN RIVERWALK that complements ALLEN PARK across the river
- Connecting the Downtown Riverwalk to Fox River Park and the I & M Canal Trail
- And many more.



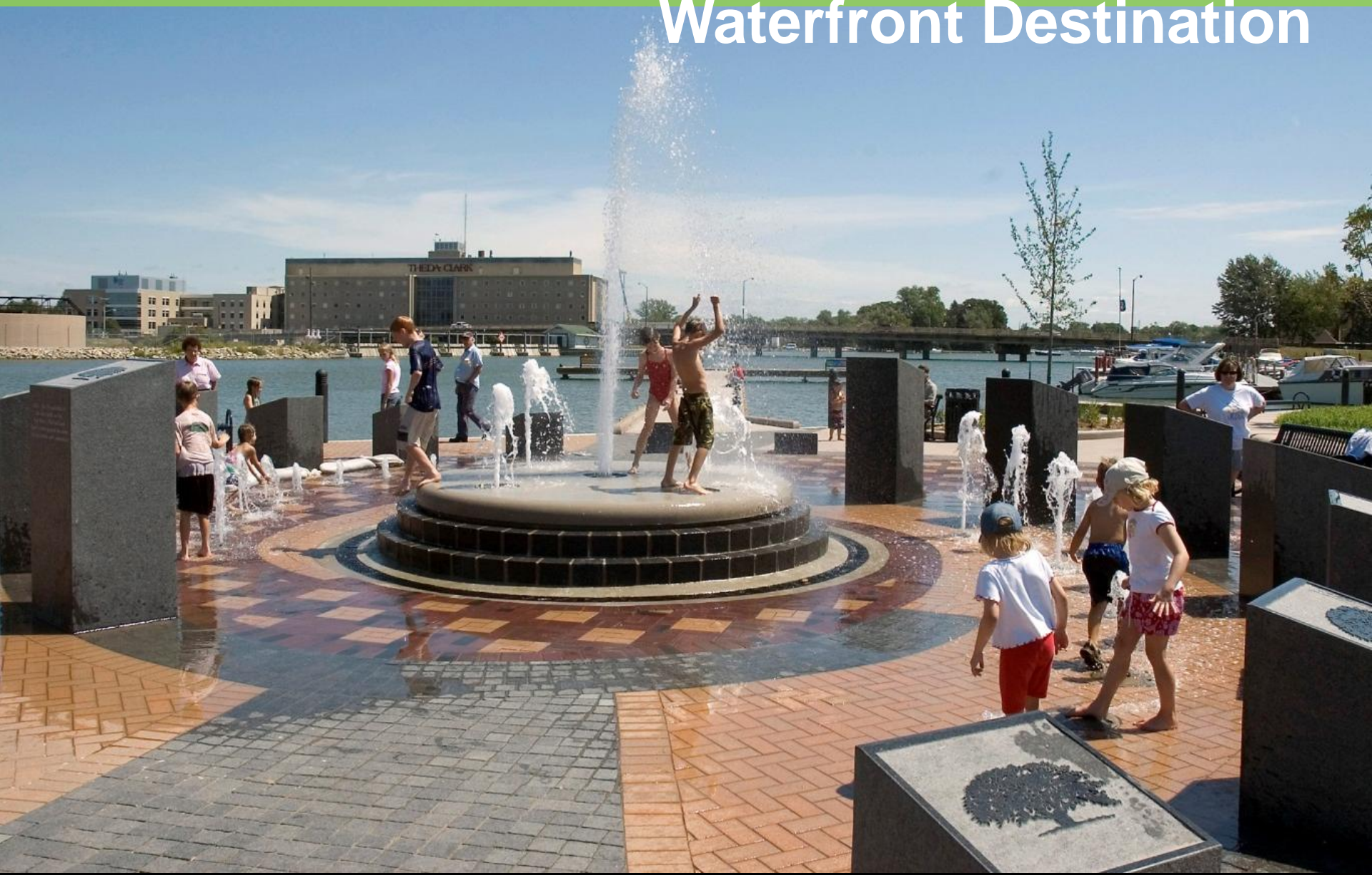
The River edge offers opportunities beyond shoreline stabilization.

Buildable Master Plans for a Unique Downtown.

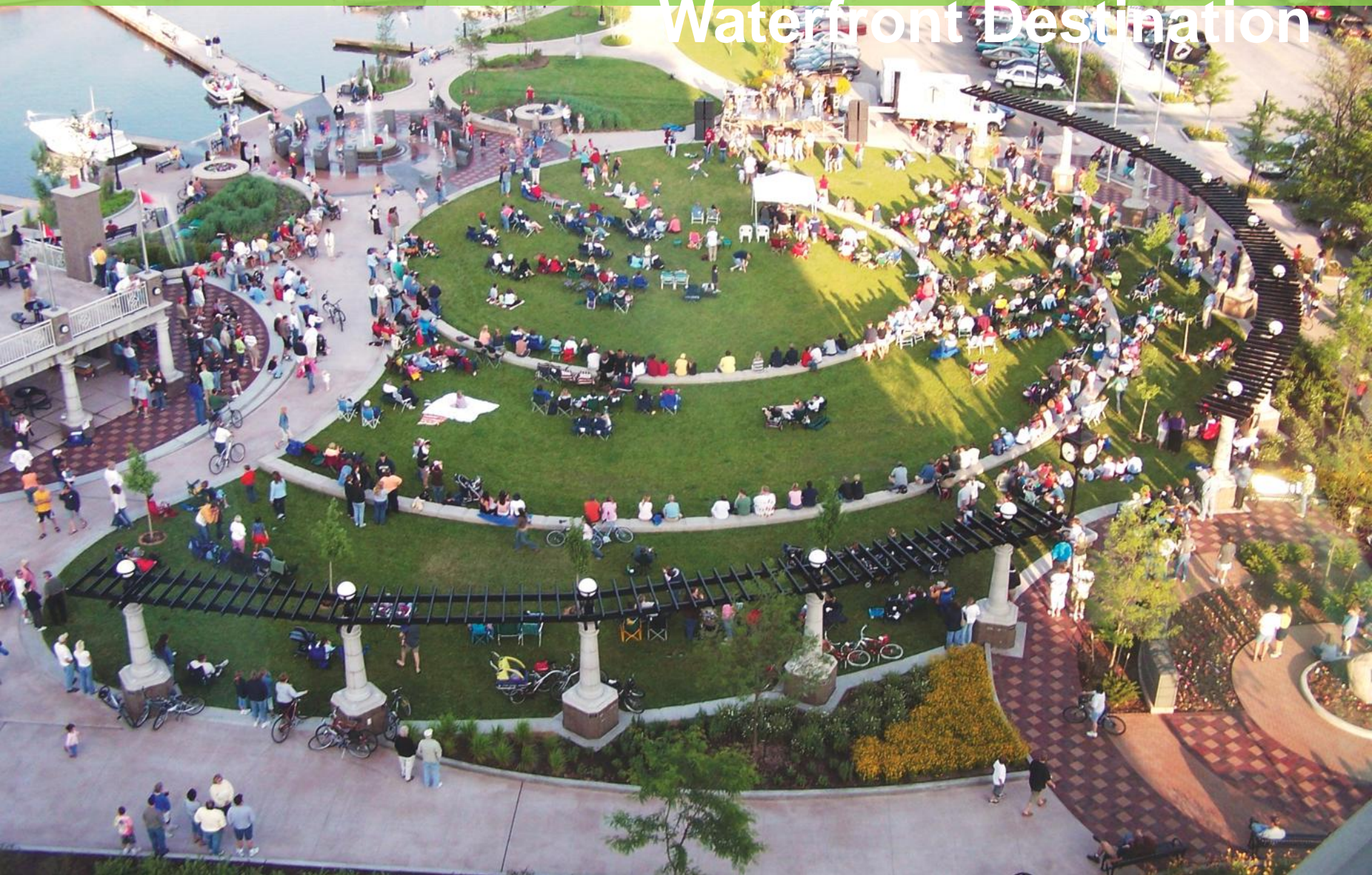
The opportunity to create a Unique Waterfront Destination



The opportunity to create a Unique Waterfront Destination



The opportunity to create a Unique Waterfront Destination



Jay Pritzker Pavilion in Chicago, Illinois

opened in 2004

The pavilion, which has a capacity of 11,000
4,000 fixed seats and a 95,000-square-foot Great
Lawn that can accommodate an additional 7,000
people.

About 4 acres

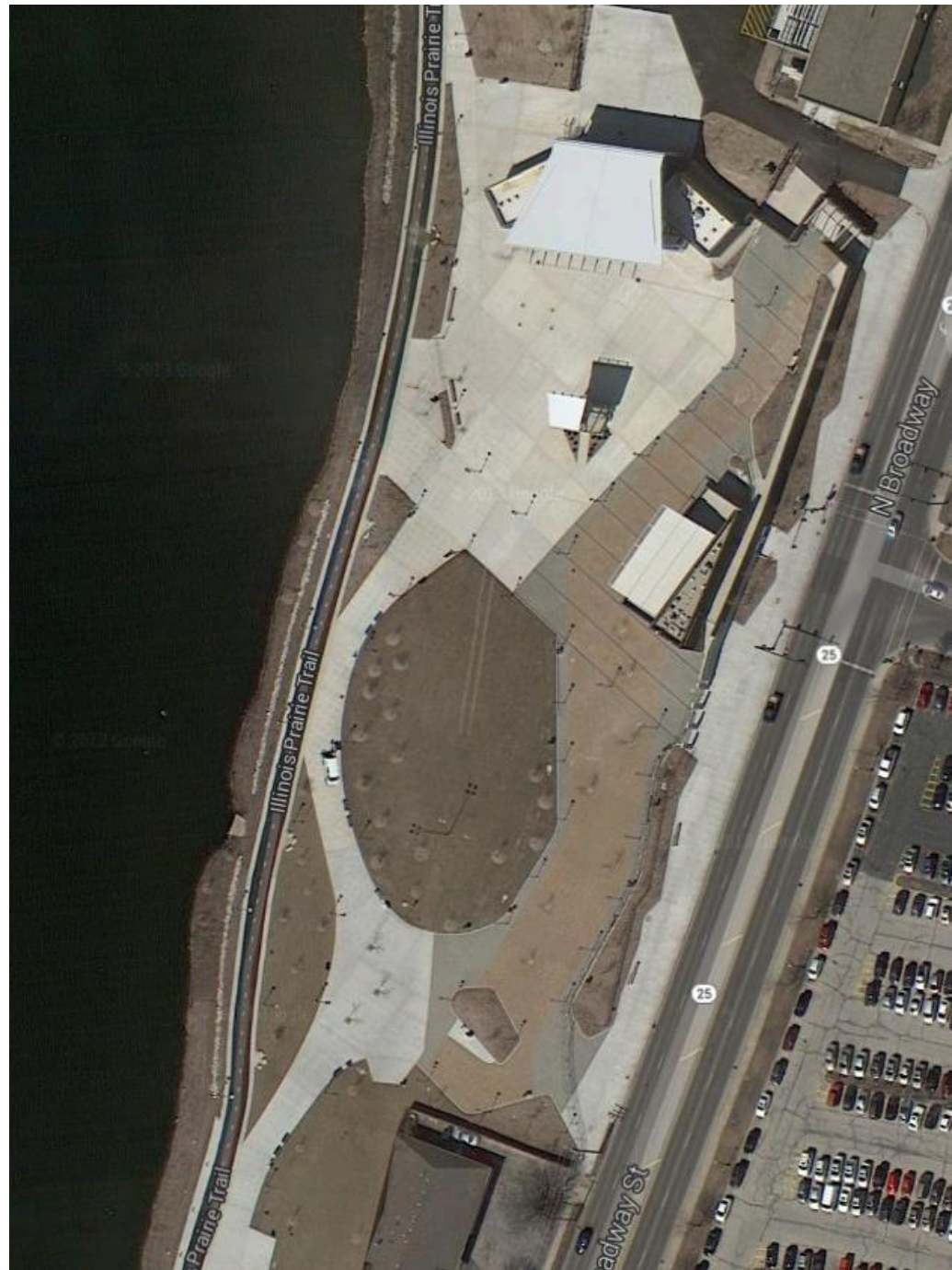


Jay Pritzker Pavilion in Chicago, Illinois



River Edge Park in Aurora, Illinois

- capacity of 6,000
- 2,000 fixed seats
- about 3 acres
- opened in 2013

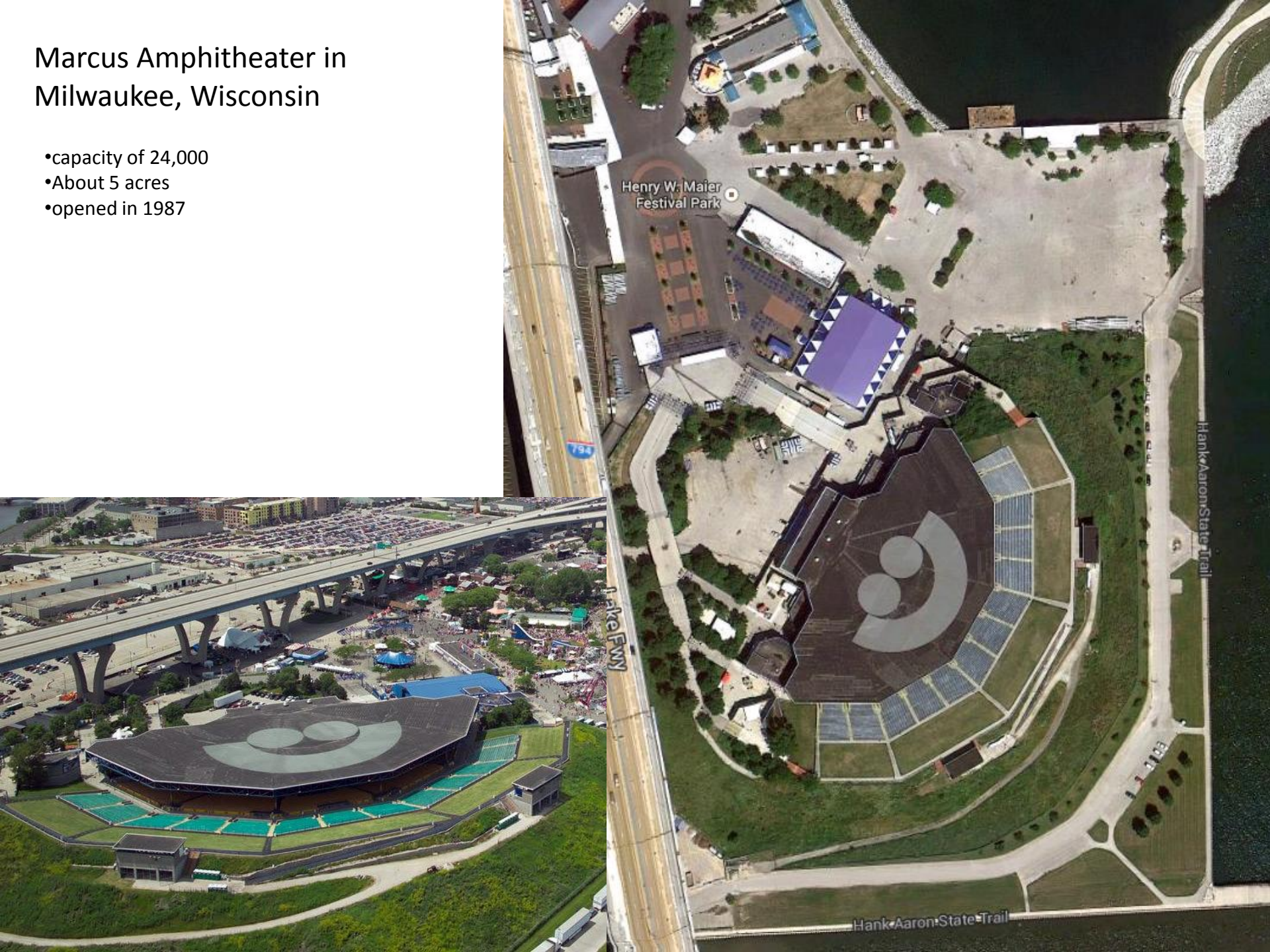


River Edge Park in Aurora, Illinois



Marcus Amphitheater in Milwaukee, Wisconsin

- capacity of 24,000
- About 5 acres
- opened in 1987

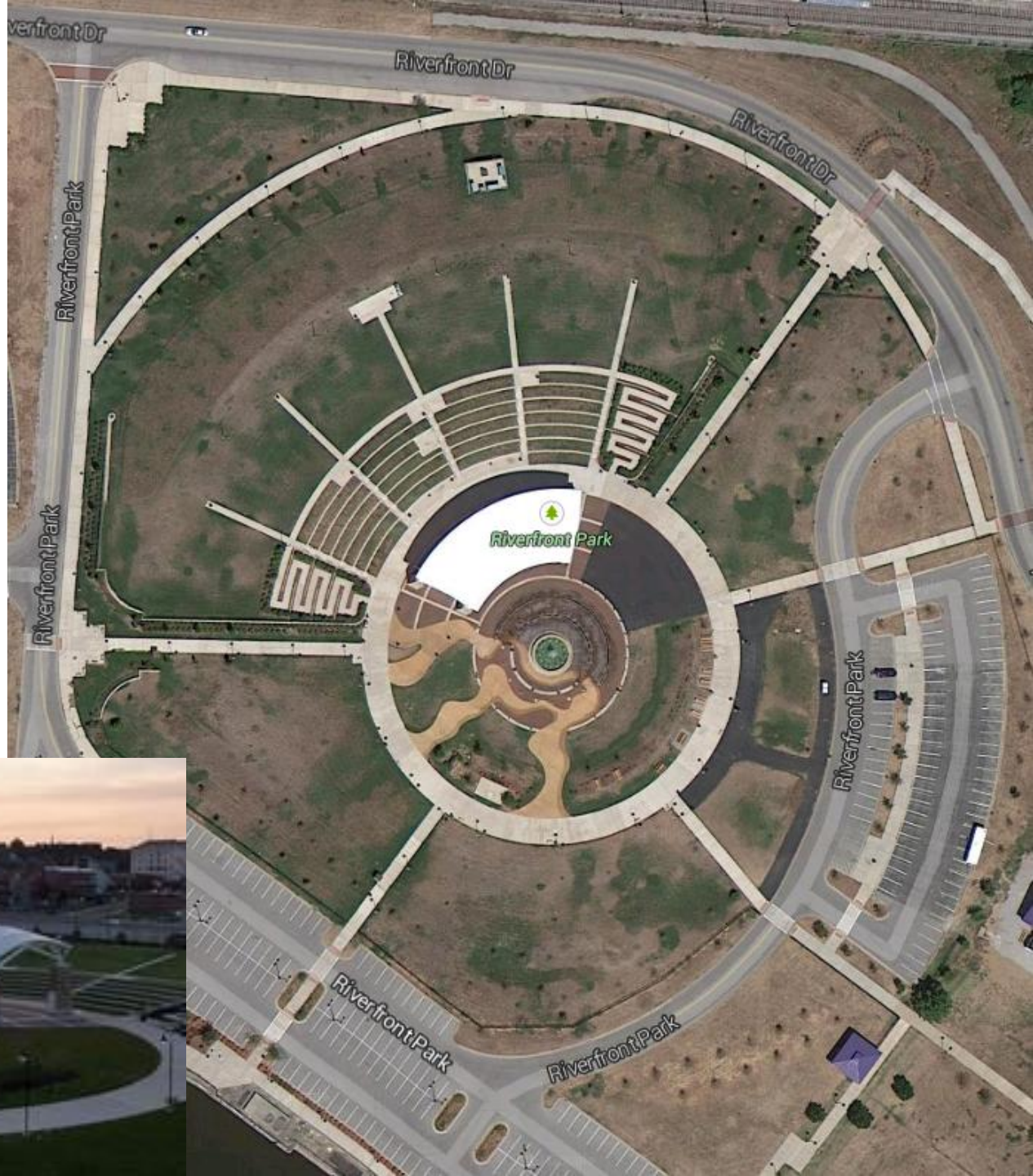


Marcus Amphitheater in Milwaukee, Wisconsin



Riverfront Plaza in Alton, Illinois

- Built in 2008
- capacity of 4,000
- About 3.5 acres



Riverfront Plaza in Alton, Illinois



Riverfront Amphitheater in New Albany Indiana

- capacity of 10,000
- reopened in 2009
- about 1.5 acres



Riverfront Amphitheater in New Albany Indiana

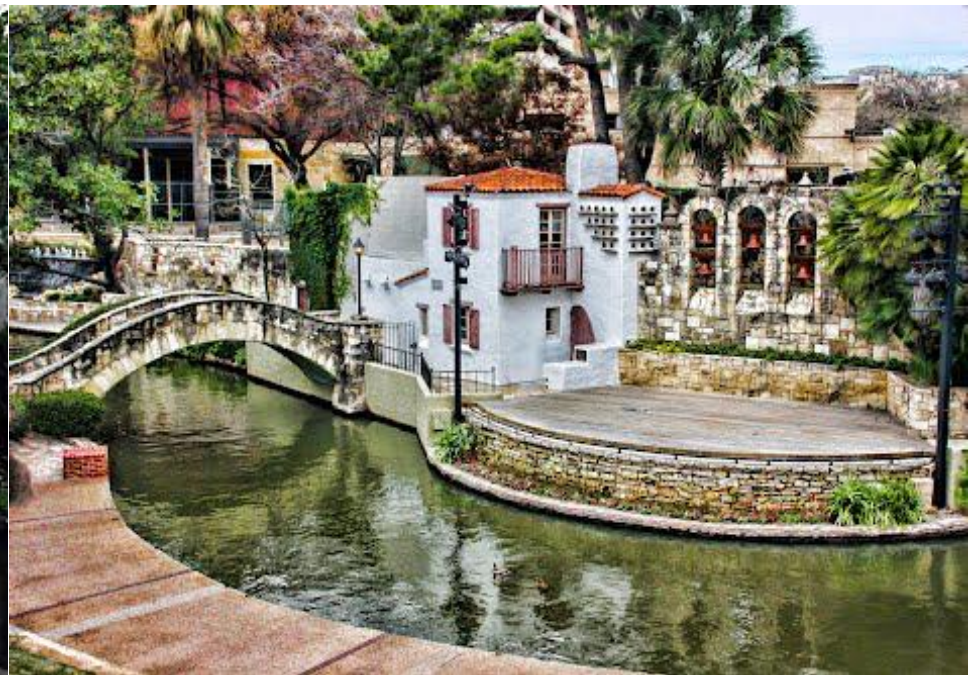


Arneson River Theatre in San Antonio, Texas

- Built in 1939
- capacity is about 800
- Less than half an acre

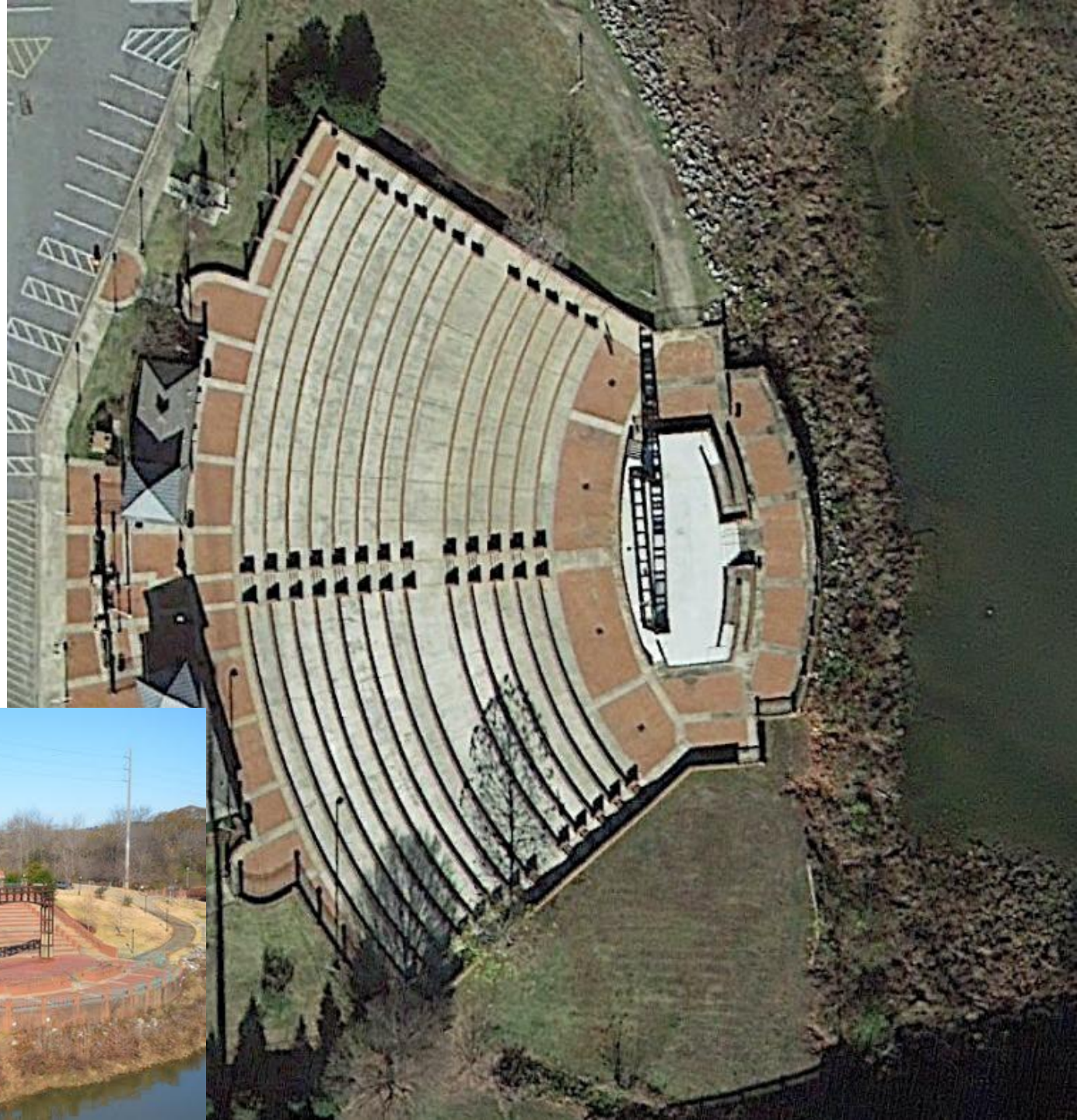


Arneson River Theatre in San Antonio, Texas



Phenix City Alabama Amphitheater

- Capacity is about 3,000
- Less than one acre

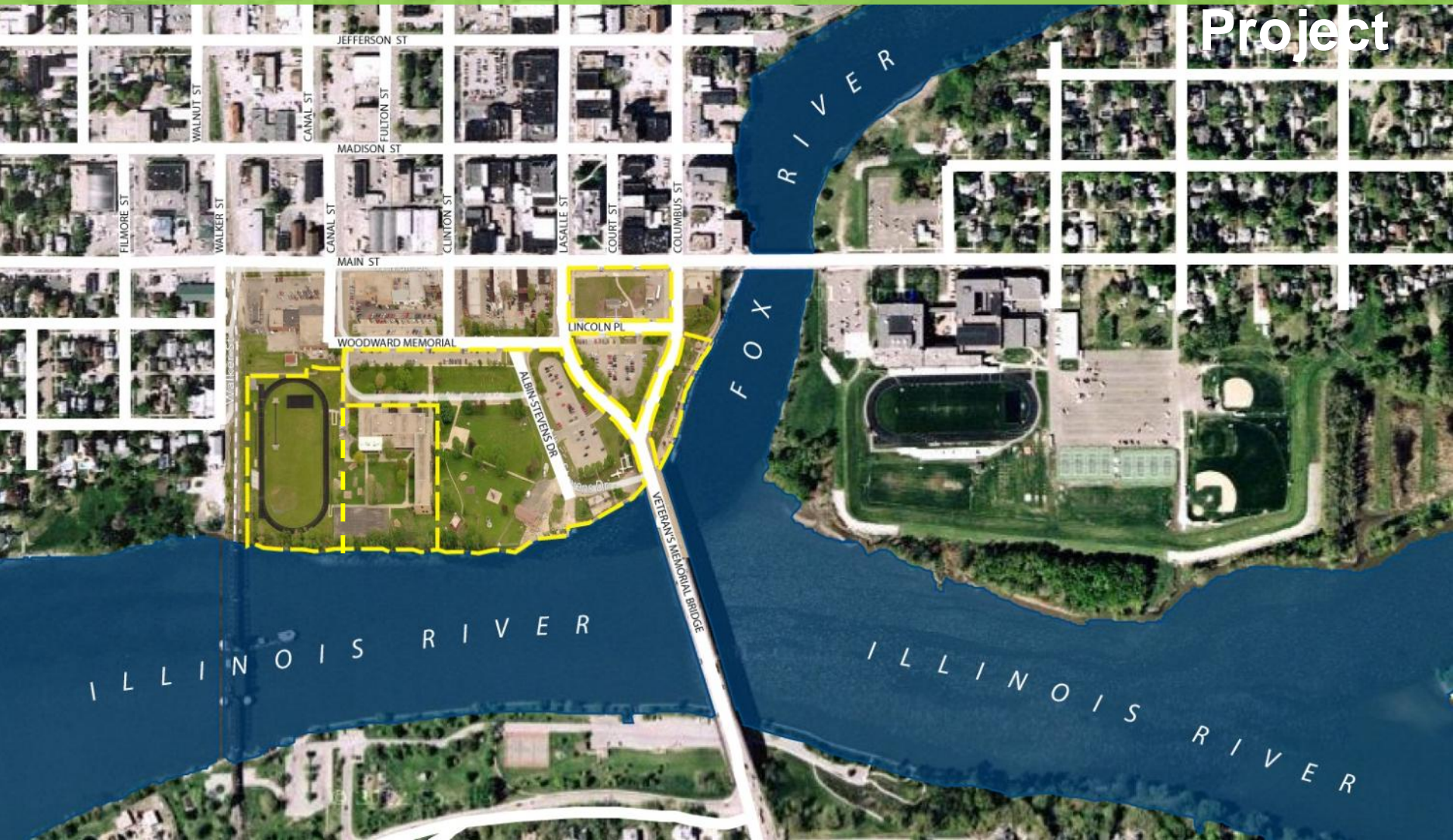


Phenix City Alabama Amphitheater



Downtown Sites Master Plan

Opportunity to Create a Catalytic Waterfront Project



NAME AND CONTACT INFORMATION (OPTIONAL)

1. What are the things that you love to do in Downtown Ottawa?

2. What activities / venues do you go to outside of Ottawa that you would like to see here?

3. What would you like to see on the Central School and Waterfront Sites?

4. Other comments and ideas: (use back side if needed)